

Kit Contents:

iSWAB vial

(1) Sterile cotton tipped applicator bags (containing 2 swabs total)

Plastic "biohazard" bag with absorbent pad*

Extra barcode label (for lab use only)

"Exempt Animal Specimen" label*

The outer box will be used to mail back the sample

Not included in rack format

* Item may not be included in certain countries. *For research use only. Not for use in diagnostic procedures.*

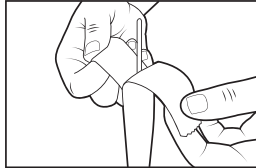


Read ALL steps before collecting samples!

Important:

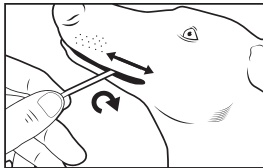
- The animal to be sampled should not eat or drink for 1 hour prior to having the sample collected.
- Do not touch swab tips or allow contact with any other object or other animal.
- You will need something with a black background to check the liquid when you are done (step 7).
- You will be using BOTH included swabs.

1



Place vial standing up on flat surface. Peel open bags containing swabs and remove a swab. Unscrew vial cap.

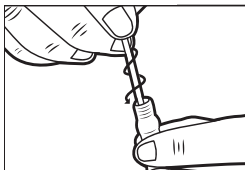
2



Rub swab tip firmly against the inside of the cheek or nasal cavity back and forth 15-20 times, using light pressure similar to brushing your teeth.

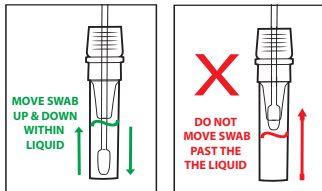
- a. Rotate swab tip during collection.
- b. Gently pushing on the outside of the animal's cheek or nose while rotating the swab will enhance cell collection.
- c. Ensure that the swab looks wet and is coated with the buccal or nasal sample to achieve the best DNA collection.
- d. For animals older than 6 months, it may be necessary to moderately restrain the animal.

3

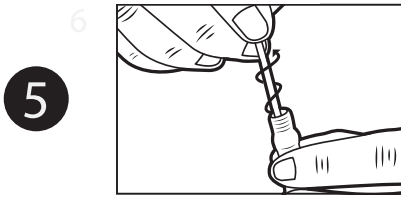


Pick up vial and hold steady in one hand. Slowly twist swab into iSWAB vial with a corkscrew motion. There will be resistance, but push the swab all the way to the bottom of tube.

4



Hold vial steady and move swab up and down rapidly inside the tube 10-15 times without moving the swab out of the liquid.



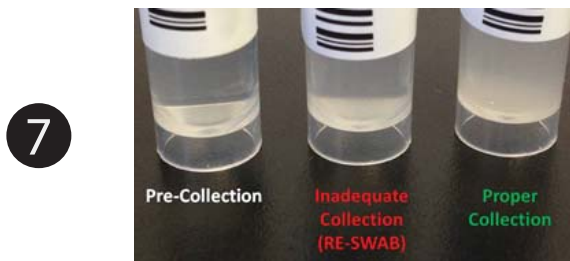
At this point remove and discard the swab. Hold vial firmly and remove swab by slowly twisting out with a corkscrew motion.

DO NOT PLACE SWABS IN THE BIOHAZARD BAG.



Repeat steps 2-5 with both included swabs in the kit (swab opposite cheek or nasal cavity with 2nd swab).

ASSURE THAT BOTH SWABS ARE USED.



After using all swabs, inspect vial against a black background. If done properly, the solution should look cloudy/milky as indicated in photo.

If sample is not cloudy/milky as described above: Repeat swabbing process immediately. It might be helpful to bring extra swabs for collection. Usually one extra swab for re-swabbing might be sufficient, but make sure liquid in the tube looks similar to the "Proper Collection" image before sending sample back to the lab.

If you are using the complete collection kit: Continue with steps 8-11
If you are using the racks: Proceed with sample processing or storage.

- 8 Replace cap tightly and place vial in Biohazard bag. The extra barcode label is for lab use only. Place Biohazard bag with vial and extra barcode label back in the box.
- 9 Place a return address label on top of the box over the original label, and return postage on the upper right corner.
- 10 Place the "Exempt Animal Specimen" label on the bottom left, so it is not covering the postage or return address label.
- 11 Peel the tape strip from under the top flap and re-seal the box.