



Biosampling Reinvented™

iSWAB Collection Instructions for Microbiome - 1200 Series

Fecal • Gut Microbiome

Kit Contents:

- iSWAB vial
- 1 swab
- Plastic “biohazard” bag with absorbent pad*
- Extra barcode label (for lab use only)
- “Exempt Human Specimen” label*
- FecesCatcher
- The outer box will be used to mail back the sample

Not included in rack format

* Item may not be included in certain countries.

For research use only. Not for use in diagnostic procedures.

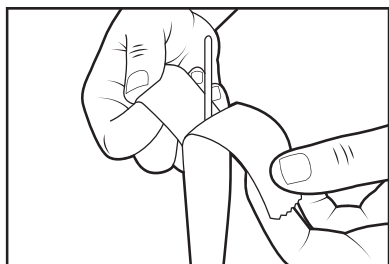


Read ALL steps before collecting samples!

Important:

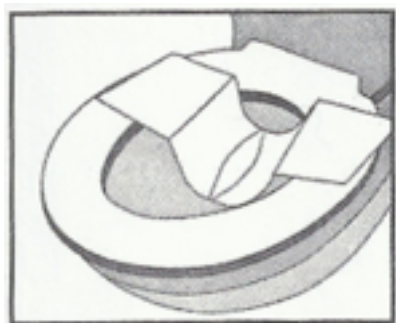
- Do not touch swab tip or allow contact with any other object

1



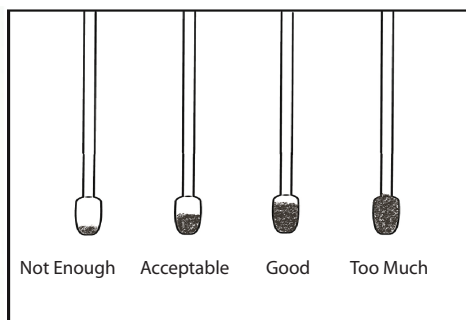
- Place vial standing up on flat surface
- Peel open bag containing swab and remove the swab
- Unscrew vial cap prior to collection

2



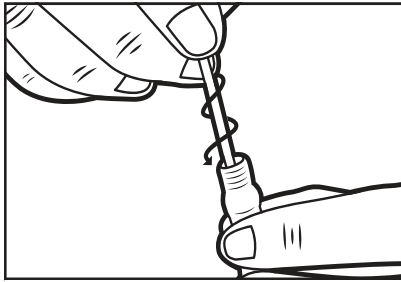
- Open the FecesCatcher carefully in the direction of the arrows
- Paste the FecesCatcher on the top of the toilet seat, as shown in the second image
- Avoid having the FecesCatcher come in contact with water
- After defecating, follow instructions below

3



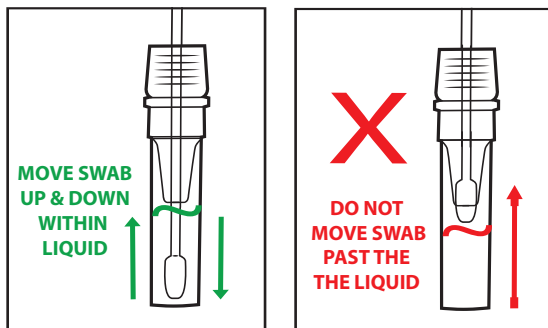
- Insert swab firmly into sample and rotate several times
- Ensure the swab tip is about 75% covered

4



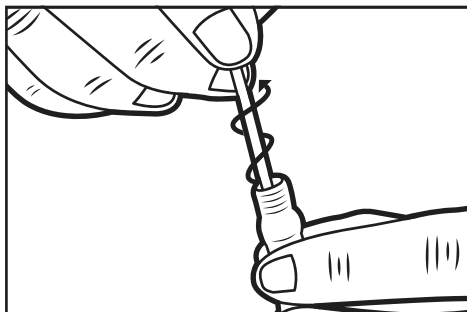
- Pick up vial and hold steady in one hand.
- Slowly twist swab into iSWAB vial with a corkscrew motion.
- There will be resistance, but push swab all the way to the bottom of tube.

5



- Hold vial steady
- Move swab up and down rapidly inside the tube 10-15 times without moving the swab out of the liquid.

6



- At this point remove and discard the swab
- Hold vial firmly and remove swab by slowly twisting out with a corkscrew motion
- **Do not place swab in the biohazard bag**

For lab or onsite collection: Proceed with sample processing or storage.
For home collection: Continue with steps 7-10.

- Replace cap tightly and place vial in Biohazard bag. The extra barcode label is for lab use only. Place Biohazard bag with vial and extra barcode label back in the box.
- Place a return address label on top of the box over the original label, and return postage on the upper right corner.
- Place the "Exempt Human Specimen" label on the bottom left, so it is not covering the postage or return address label.
- Peel the tape strip from under the top flap and re-seal the box.