

Kit Contents:

iSWAB vial

1 swab

Plastic "biohazard" bag with absorbent pad*

Extra barcode label (for lab use only)

"Exempt Human Specimen" label*

The outer box will be used to mail back the sample

Not included in rack format

* Item may not be included in certain countries.

For research use only. Not for use in diagnostic procedures.

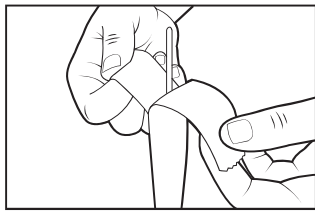


Read ALL steps before collecting samples!

Important:

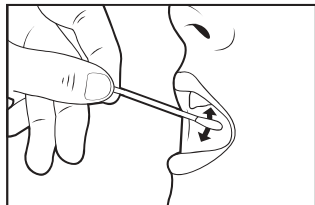
- Do not eat, drink, or smoke for 30 minutes prior to using the kit
- Do not touch swab tips or allow contact with any other object

1



Place vial standing up on flat surface. Peel open bags containing swab and remove the swab. Unscrew vial cap.

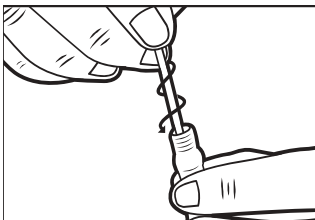
2



Rub swab tip firmly against the inside of your cheek 15-20 times, using light pressure similar to brushing your teeth.

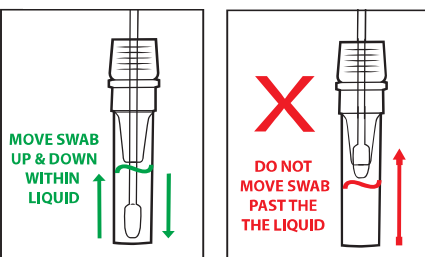
- Rotate swab tip as you are rubbing.
- Cover entire cheek from top to bottom and side to side.

3

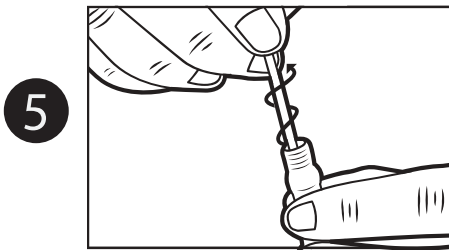


Pick up vial and hold steady in one hand. Slowly twist swab into iSWAB vial with a corkscrew motion. There will be resistance, but push swab all the way to the bottom of tube.

4



Hold vial steady and move swab up and down rapidly inside the tube 10-15 times without moving the swab out of the liquid.



At this point remove and discard the swab. Hold vial firmly and remove swab by slowly twisting out with a corkscrew motion.

DO NOT PLACE SWAB IN THE BIOHAZARD BAG.

**For lab or onsite collection: Proceed with sample processing or storage.
For home collection: Continue with steps 6-9.**

- 6 Replace cap tightly and place vial in Biohazard bag. The extra barcode label is for lab use only. Place Biohazard bag with vial and extra barcode label back in the box.
- 7 Place a return address label on top of the box over the original label, and return postage on the upper right corner.
- 8 Place the "Exempt Human Specimen" label on the bottom left, so it is not covering the postage or return address label.
- 9 Peel the tape strip from under the top flap and re-seal the box.