



Biosampling Reinvented™

iSWAB Collection Instructions for Microbiome - 1200 Series

Oral • Rectal • Vaginal • Skin • Fecal • Gut Microbiome • Soil

Kit Contents:

- iSWAB vial
- 2 swabs
- Plastic “biohazard” bag with absorbent pad*
- Extra barcode label (for lab use only)
- “Exempt Human Specimen” label*
- The outer box will be used to mail back the sample

Not included in rack format.

* Item may not be included in certain countries.

For research use only. Not for use in diagnostic procedures.

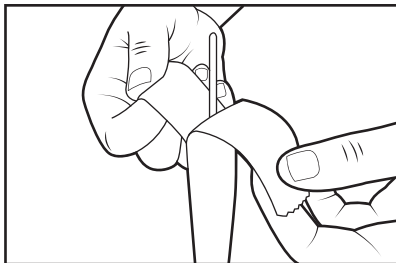


Read ALL steps before collecting samples!

Important:

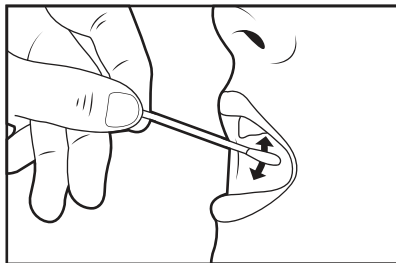
- For oral samples, do not eat, drink, or smoke for 30 minutes prior to using the kit
- Do not touch swab tips or allow contact with any other object
- You will be using ALL included swabs. **For fecal/soil samples, only 1 swab will be used.**

1



Place vial standing up on flat surface. Peel open bags containing swabs and remove a swab. Unscrew vial cap prior to collection.

2



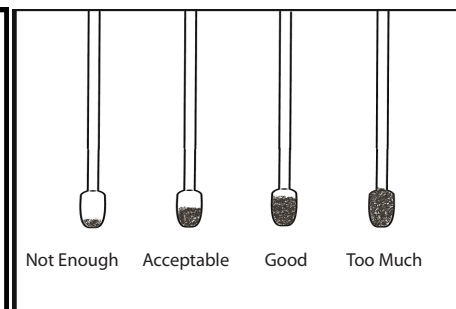
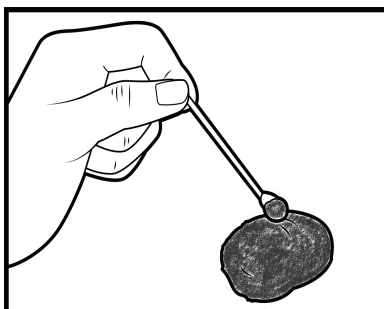
For oral or skin collection: Rub swab tip firmly against the surface of interest 15-20 times, using light pressure similar to brushing your teeth.

- Rotate swab tip as you are rubbing to cover entire swab.
- Repeat with 2nd swab.

For vaginal, nasal, or rectal collection: Gently insert swab into cavity and gently rotate swab several times.

- Cover entire swab area from top to bottom and side to side
- Repeat with 2nd swab.

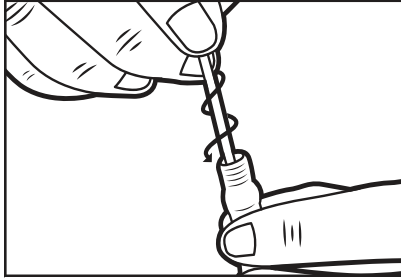
3



For fecal and soil samples:

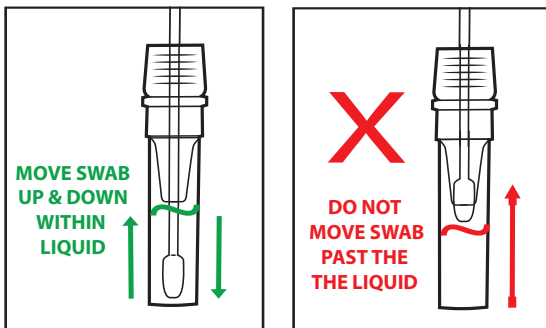
- Insert swab firmly into sample and rotate several times.
- Ensure the swab tip is about 75% covered.

4



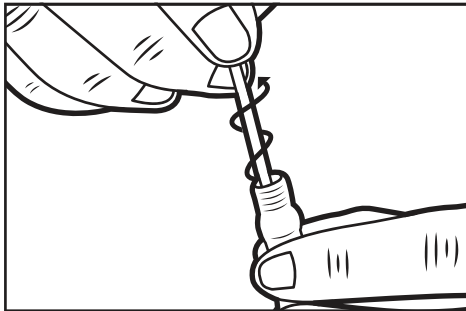
Pick up vial and hold steady in one hand. Slowly twist swab into iSWAB vial with a corkscrew motion. There will be resistance, but push swab all the way to the bottom of tube.

5



Hold vial steady and move swab up and down rapidly inside the tube 10-15 times without moving the swab out of the liquid.

6



At this point remove and discard the swab. Hold vial firmly and remove swab by slowly twisting out with a corkscrew motion.

DO NOT PLACE SWABS IN THE BIOHAZARD BAG.

For lab or onsite collection: Proceed with sample processing or storage.

For home collection: Continue with steps 7-10.

- 7 Replace cap tightly and place vial in Biohazard bag. The extra barcode label is for lab use only. Place Biohazard bag with vial and extra barcode label back in the box.
- 8 Place a return address label on top of the box over the original label, and return postage on the upper right corner.
- 9 Place the "Exempt Human Specimen" label on the bottom left, so it is not covering the postage or return address label.
- 10 Peel the tape strip from under the top flap and re-seal the box.