

INSTRUCTIONS FOR ORAL USE – English

Caution: Read all steps before collecting samples.

DEVICE NAME

iSWAB-DSC Technology

INDICATION FOR USE

The iSWAB-DSC device allows for the collection and stabilization of DNA at the point of collection without the need for swab inclusion. Typical yields of between 2-7µg (iSWAB-DSC) of DNA with <1% bacterial contamination can be achieved. The gentle collection and lysis chemistry of the alcohol-free iSWAB buffer allows for recovery of double-stranded, large fragment DNA similar to the genomic DNA generated from blood, making it suitable for complex genomics downstream arrays such as microarrays and Next Generation Sequencing.

CONTENTS

iSWAB-Discovery Vial

1 swab*

Plastic Biohazard bag with absorbant pad*

Extra barcode label (for lab use only)*

Exempt Human Specimen "label"*

The outer box will be used to mail back* sample

Not included in rack format*

*Item may not be included in certain countries.

STORAGE AND STABILITY

Pre-collection: 18 months from date of manufacture between 15-30° C.

Transport temperature, post-collection: 15-30° C.

Sample stability and storage, post-collection: 21 days for microbial RNA and 40 days for microbial DNA at 15-30° C; if longer storage time is required, collected samples can be stored at -20 to -80° C.

Additional information available at www.mawidna.com.

WARNING AND PRECAUTIONS

For external use only. This product is a specimen collection device for biological samples. If the reagent inside the tube comes in contact with your eyes or your skin, it is recommended to immediately wash with water and soap. Tube cap choking hazard. Do not ingest.

DEVICES

All the iSWAB-Discovery family of products consist of one tube with 400 µL collection volume and stabilizing liquid.

REF /Catalog Number	Product Family Name	Collection Volume
iSWAB-DSC	iSWAB-Discovery Collection Kit	400 µL
ISD-T-DSC-R	iSWAB-Discovery Collection Tube Rack	400 µL x 50
iSD-T-DSC	iSWAB-Discovery Collection Tube	400 µL

PREPARATION FOR USE

Before sample collection, verify preferred method of collection with your processing lab.

- Note: It is recommended not to eat, drink, or smoke for 30 minutes before collecting your sample
- Do not touch swab tips or allow contact with any other object.
- Tap the tube gently 2-3 times before collection to concentrate all liquid to the bottom.
- Use 1 swab included in kit

1 Place vial standing up on a flat surface. Peel open bags containing swabs and remove a swab. Unscrew vial cap before collecting sample.

2 For oral collection: Rub swab tip firmly against the inside of your cheek 15-20 times, using light pressure similar to brushing your teeth
 a. Rotate swab tip as you are rubbing
 b. Cover entire cheek from the top to bottom and side to side

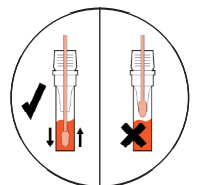
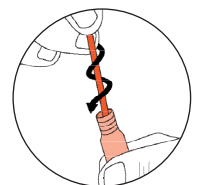
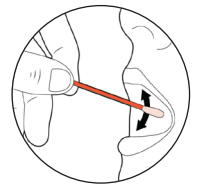
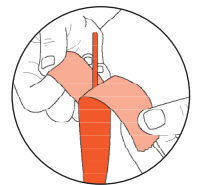
3 Pick up vial and hold steady in one hand. Slowly twist swab into iSWAB vial with a corkscrew motion. There will be resistance, but push swab to the bottom of tube.

4 Hold vial steady and move swab up and down rapidly inside the tube 10-15 times without moving the swab out of the liquid.

5 At this point remove and discard the swab. Hold vial firmly and remove swab by slowly twisting out with a corkscrew motion. Dispose used swab.
DO NOT PLACE SWABS IN THE BIOHAZARD BAG

6 Repeat steps 2-5 with all 4 swabs included in the kit. Alternating between the left and right side of the cheeks. Make sure all swabs are used

7 For Lab or onsite collection: Proceed with sample processing or storage.
 For home collection: Replace cap tightly and place vial in Biohazard bag. The extra barcode label is for lab use only. Place Biohazard bag with vial and extra barcode label back in the box. Place a return address label on top of the box over the original label, and return postage on the upper right corner. Place the "Exempt Human Specimen" label on the bottom left. Do not cover postage or return address. Peel the tape strip from under the top flap and re-seal the box



⚠ Attention. See instructions for use.

🕒 Storage temperature.

🕒 Use by date (collect sample by).

📄 Consult package insert before use.

👤 For one use only.

CE CE marking.

🚫 Do not use if package is damaged.

🏷️ Lot number.

📄 Catalog Number.

👤 Authorized representative.

🏢 Manufacturer.

🏠 In vitro diagnostic medical device.

Mawi DNA Technologies LLC

26203 Production Ave, Suite No.3 | Hayward, CA 94545

Tel: 510-256-5186 Toll Free (US & Canada): 855-DNA-SWAB

www.MawiDNA.com



CEpartner4U

Esdoornlaan 13 | 3951 DB

Maarn | The Netherlands

www.cepartner4u.com

IFU-0109 (A) iSWAB-Discovery

Effective Date:2022-03-21