

# iSWAB™-Microbiome

## Stable Ambient Transport and Storage of Viral and Microbial Nucleic Acids

iSWAB™-Microbiome collection device is a non-invasive, non-toxic sample collection technology for stable ambient transport and storage of viral/microbial DNA and RNA from various sample types including fecal, vaginal, skin, soil, nasal, oral, and saliva. The iSWAB™ is fitted with a proprietary insert designed to optimize the release of specimens collected with swabs into the stabilizing buffer, creating a minimal footprint and allowing for swab-free transport of specimens. Purified viral/microbial DNA or RNA isolated from collected samples are suitable for qPCR, microarray, NGS, and legally marketed molecular diagnostic assays for microbiome research in health, wellness, and forensics. The iSWAB™-Microbiome collection device is intended for the stabilization and inactivation of upper and lower respiratory human specimens suspected of containing SARS-CoV-2 and other biosamples with microbial community. Sample stability and storage: 42 days for SARS-CoV-2 samples, 21 days for microbial RNA, and 40 days for microbial DNA at 15-30 °C.

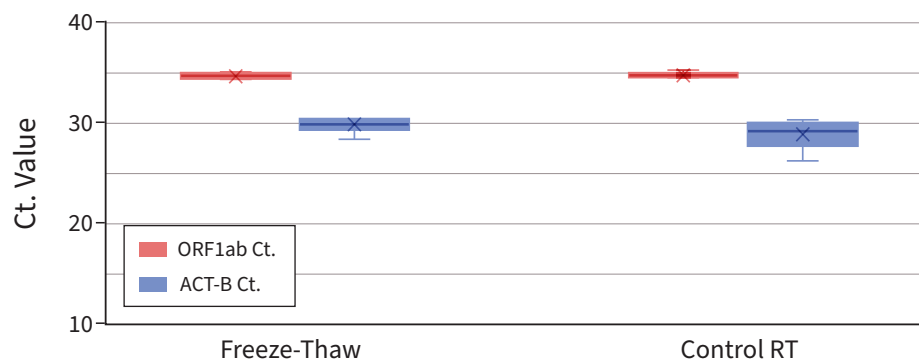
### Inactivation of Infectious Viruses

	0 min	30 min	2 hrs	6 hrs	12 hrs	24 hrs	48 hrs	72 hrs
Influenza A	++++	+/-	+/-*	ND	ND	ND	ND	ND
Influenza B	++++	+/-	+/-*	ND	ND	ND	ND	ND
SARS-CoV-2	++++	+/-	+/-*	ND	ND	ND	ND	ND

iSWAB-Microbiome Inactivation Data. Efficiency of iSWAB-Microbiome in the inactivation of Influenza A, B and SARS-CoV-2 viruses over 72 hr incubation period at room temperature.

++++ Very high (104 TCID50/mL) • +++ High • ++ Medium • +/- Low • ND Not Detected

### Comparison of Ct. Amplification Between Devices Subjected to Freeze-Thaw and Control Conditions



Ct. Amplification of ORF1ab and ACT-B across both lots for spiked samples collected in devices subjected to either freeze-thaw cycles or control (room temperature) conditions. The data demonstrates good replicability between the freeze-thaw and control conditions, indicating that shipping/pre-collection stability is established.

REF /Catalog Number	Product Name	Stabilizing Buffer
ISWAB-MB-1200	iSWAB™-Microbiome Collection Kit	1.0 mL
ISM-T-1200-R	iSWAB™-Microbiome Collection Device Rack	1.0 mL x 50 units
ISM-T-1200	iSWAB™-Microbiome Collection Device	1.0 mL x 500 units
ISWAB-MBF-1200	iSWAB™-Microbiome Collection Kit (with Feces Catcher)	1.0 mL

**mawi**

Mawi DNA Technologies LLC  
[www.MawiDNA.com](http://www.MawiDNA.com)

26203 Production Ave, Suite 3 | Hayward, CA 94545

Tel:510-256-5186 | US/Canada: 510-256-5186 | 855-DNA-SWAB

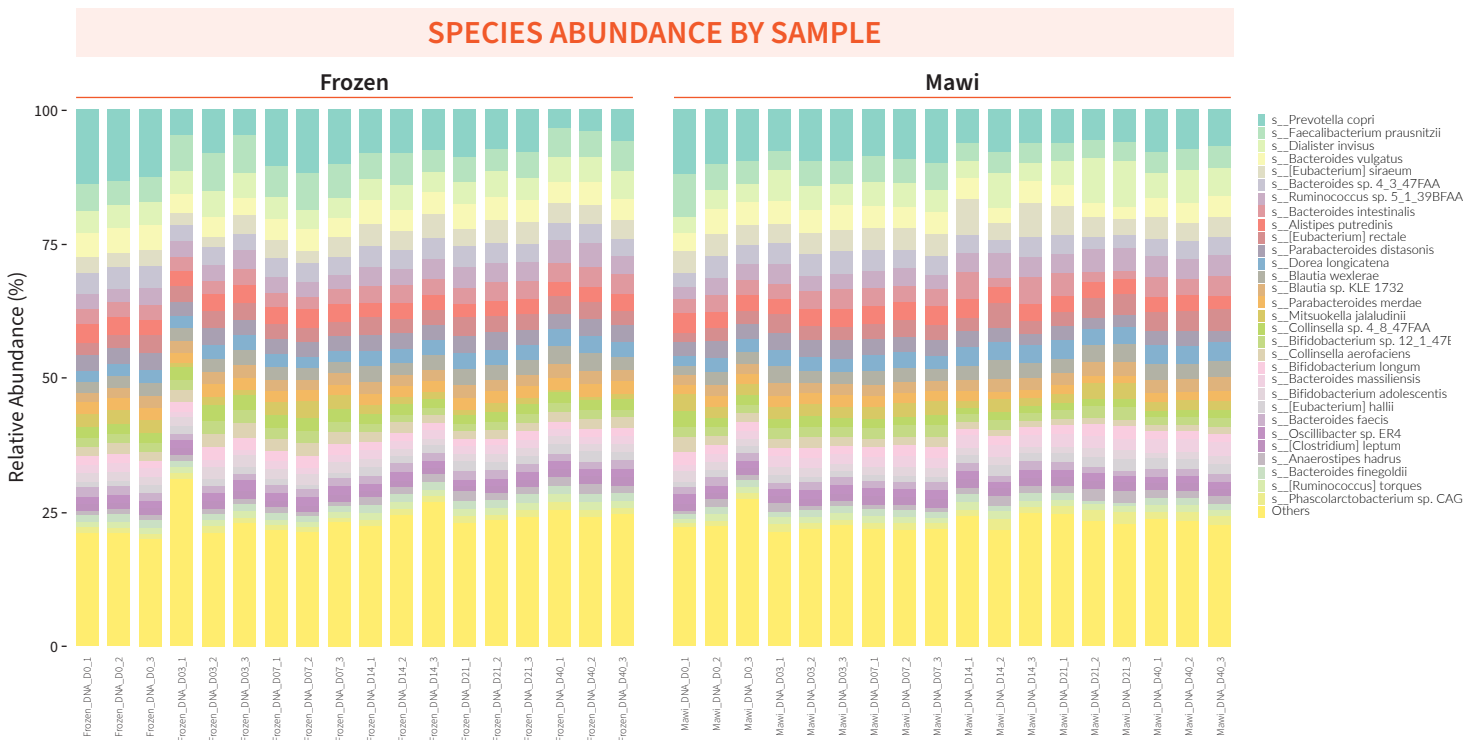
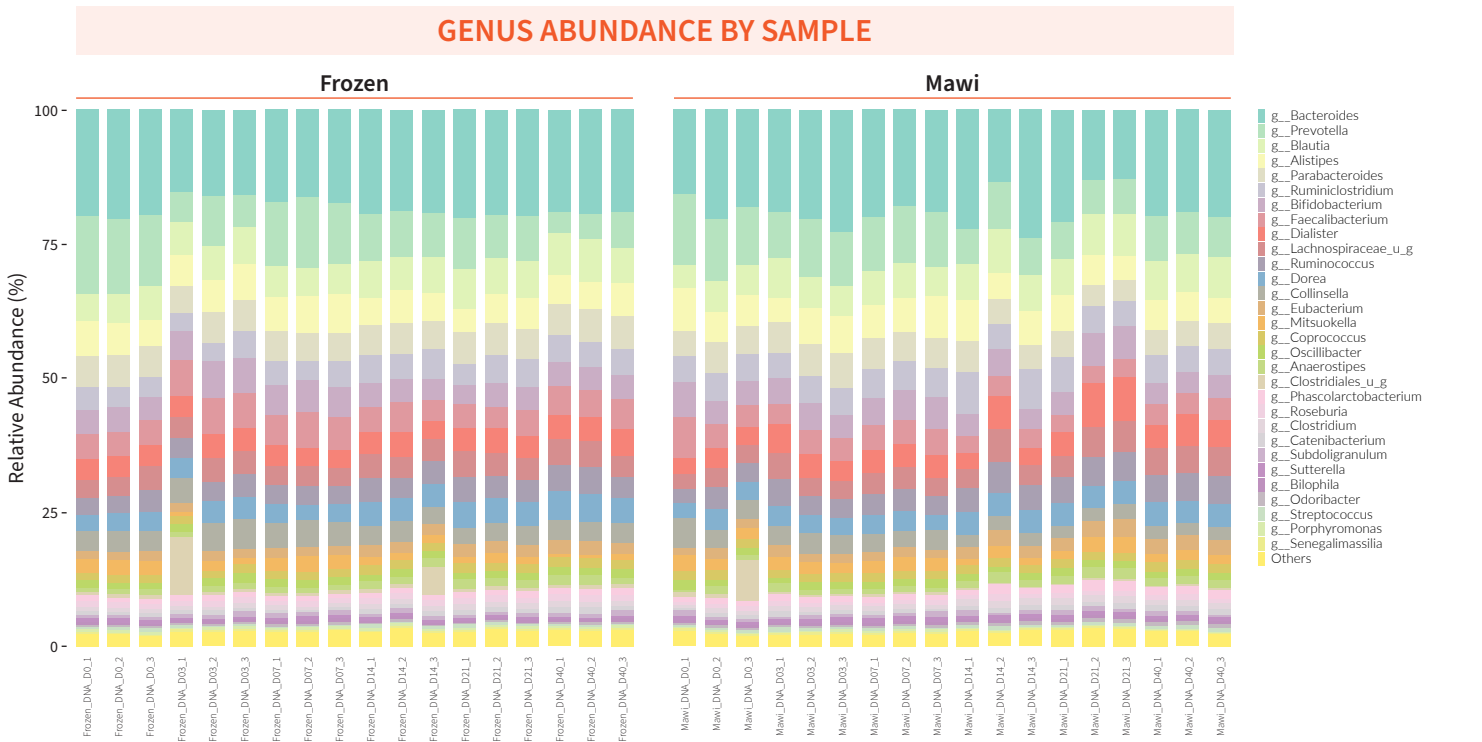
**EC REP** CEpartner4U [www.cepartner4u.com](http://www.cepartner4u.com)

Esdoornlaan 13 | 3951 DB | Maarn | The Netherlands



iSWAB is a trademark of Mawi DNA Technologies LLC. Specifications, terms and pricing are subject to change. Not all products are available in all countries. Please consult your local sales representative for details. © 2013 Mawi DNA Technologies LLC. All rights reserved.Version ISFDS-1.01

# The Microbial Diversity/Profile of Fecal Samples from Point of Collection to Processing Remains Unaffected with **iSWAB-Microbiome** and is Much More Similar to Frozen Samples. Part I (Customer/ Third-Party Validated Data).



Mawi DNA Technologies LLC  
**www.MawiDNA.com**  
 26203 Production Ave, Suite 3 | Hayward, CA 94545  
 Tel:510-256-5186 | US/Canada: 510-256-5186 | 855-DNA-SWAB

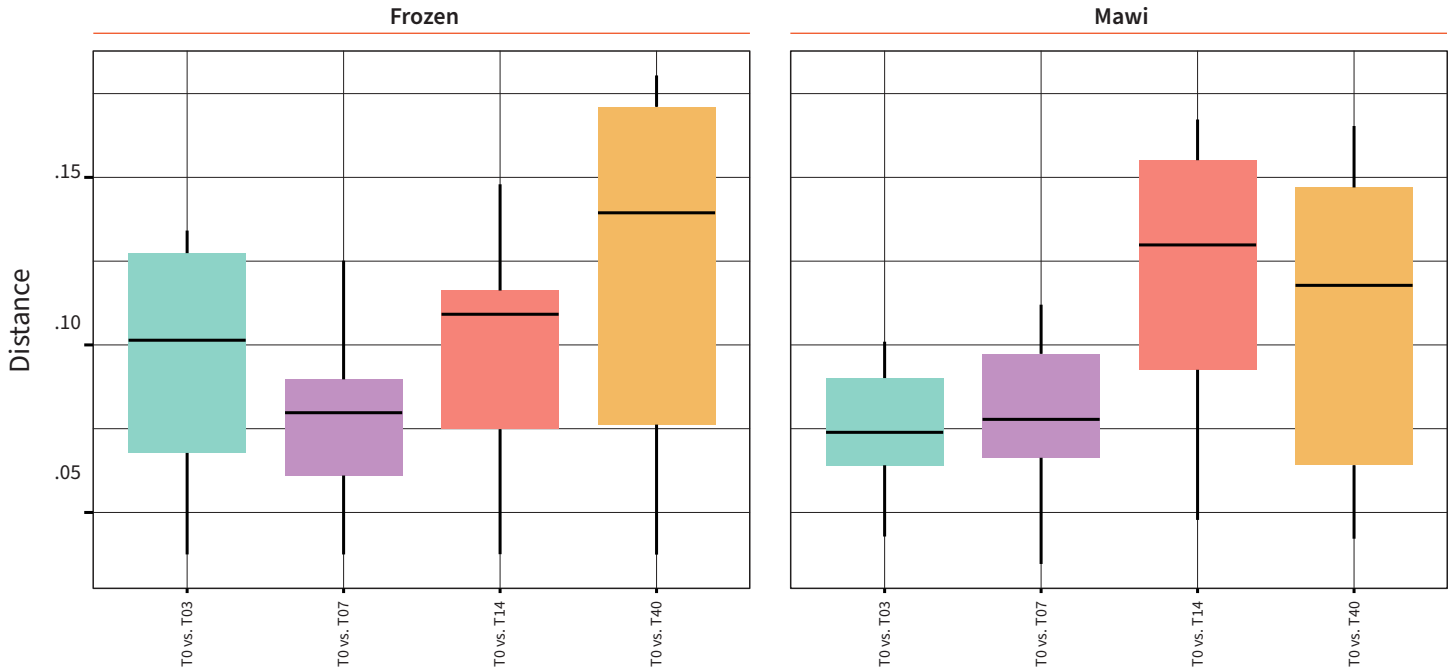
**EC REP** CEpartner4U [www.cepartner4u.com](http://www.cepartner4u.com)  
 Esdoornlaan 13 | 3951 DB | Maarn | The Netherlands

FDA REGISTERED Mhra IVD CE ISO 9001 CERTIFIED ISO 13485 CERTIFIED

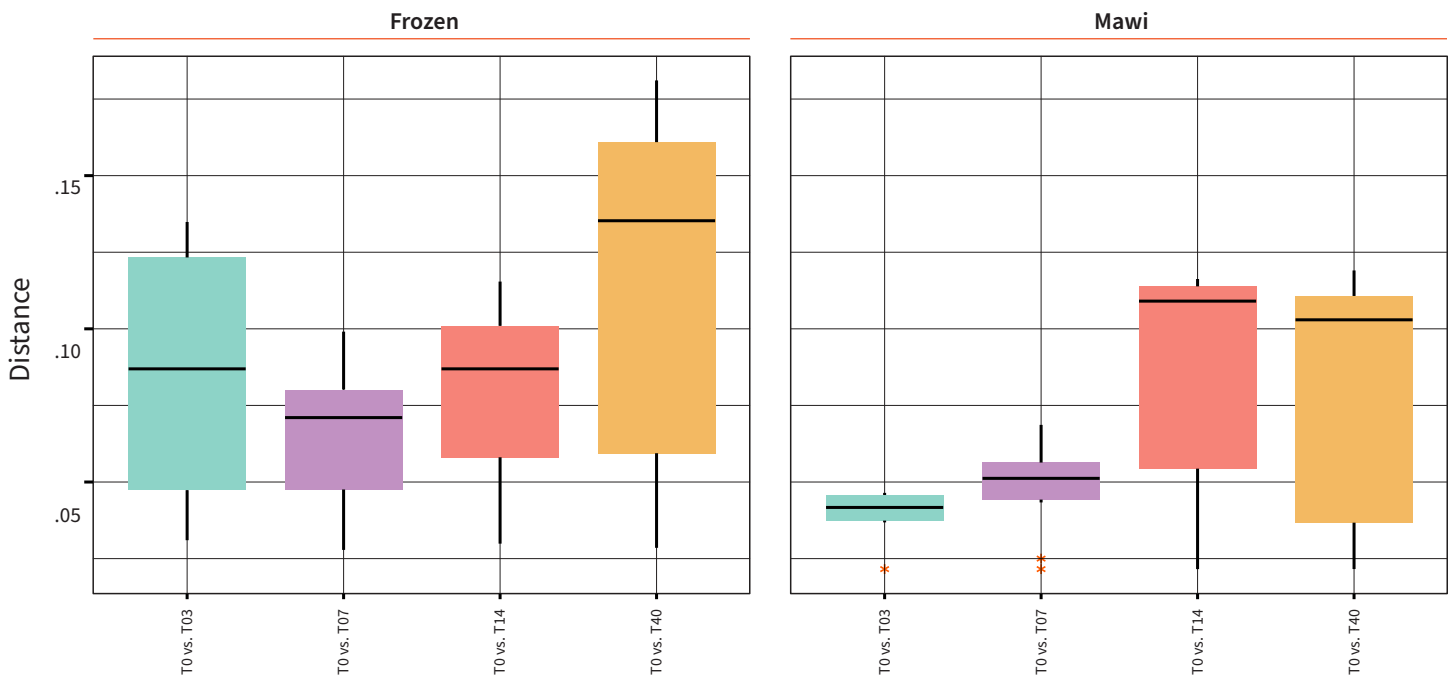
iSWAB is a trademark of Mawi DNA Technologies LLC. Specifications, terms and pricing are subject to change. Not all products are available in all countries. Please consult your local sales representative for details. © 2013 Mawi DNA Technologies LLC. All rights reserved. Version ISFDS-1.01

The Microbial Diversity/Profile of Fecal Samples from Point of Collection to Processing Remains Unaffected with **iSWAB-Microbiome** and is Much More Similar to Frozen Samples. Part II (Customer/ Third-Party Validated Data).

COMPARISON OF BRAY-CURTIS DISSIMILARITY BETWEEN TIME POINTS



COMPARISON OF BRAY-CURTIS DISSIMILARITY FOR THE 30 MOST PREVALENT SPECIES

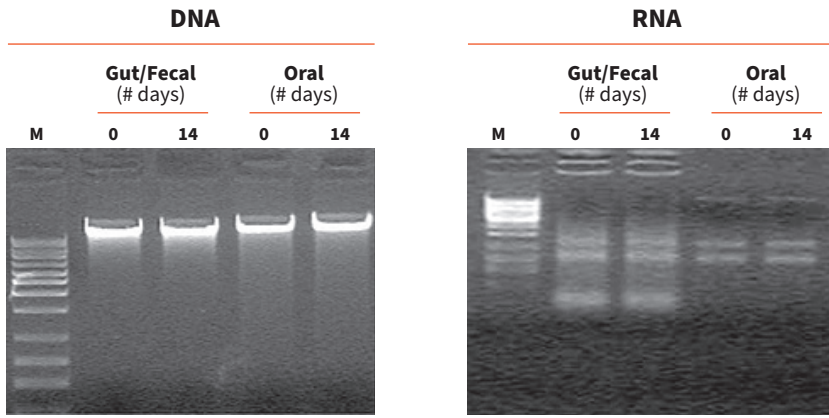


Mawi DNA Technologies LLC  
[www.MawiDNA.com](http://www.MawiDNA.com)  
 26203 Production Ave, Suite 3 | Hayward, CA 94545  
 Tel:510-256-5186 | US/Canada: 510-256-5186 | 855-DNA-SWAB

[www.cepartner4u.com](http://www.cepartner4u.com)  
 Esdoornlaan 13 | 3951 DB | Maarn | The Netherlands

iSWAB is a trademark of Mawi DNA Technologies LLC. Specifications, terms and pricing are subject to change. Not all products are available in all countries. Please consult your local sales representative for details. © 2013 Mawi DNA Technologies LLC. All rights reserved.Version ISFDS-1.01

# Microbial DNA and RNA Profiles from iSWAB-Microbiome

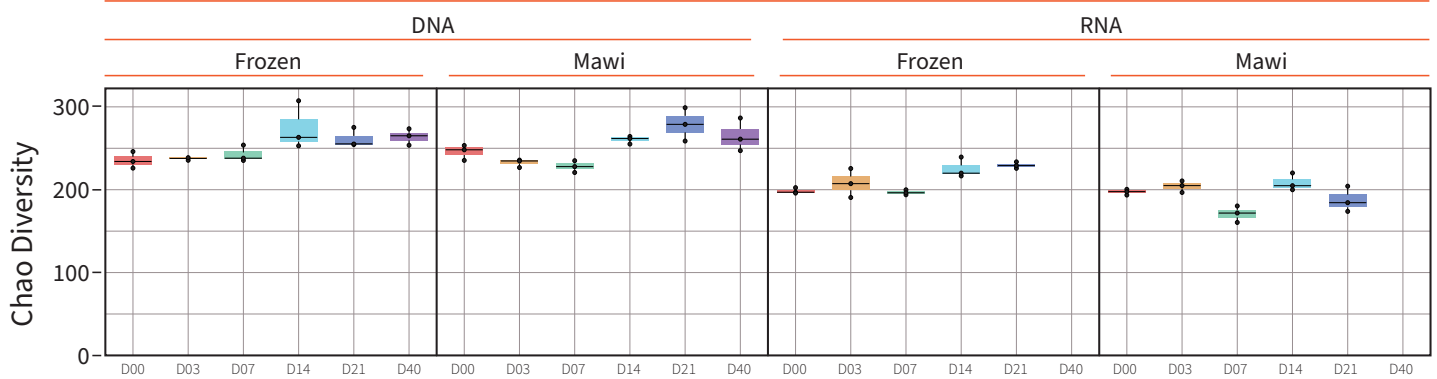


**Left:** Purified microbial DNA from iSWAB-Microbiome oral or gut/fecal pooled samples were normalized to 50 ng of DNA/well and loaded on 1% agarose (M: 1KB DNA ladder).

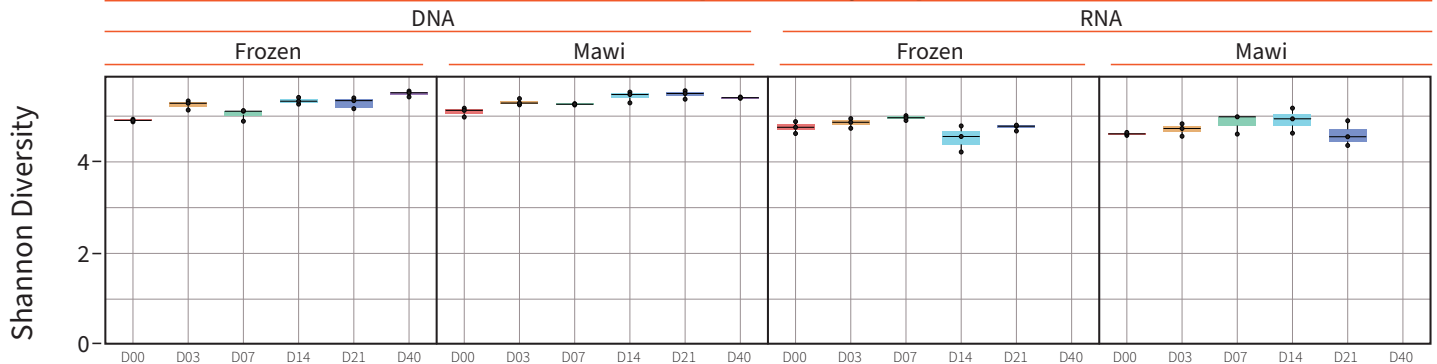
**Right:** Purified microbial total RNA with RNeasy mini kit from iSWAB-Microbiome oral or gut/fecal pooled samples were normalized to 20 ng/well and analyzed by gel electrophoresis (M: 1KB DNA ladder).

## 16s rRNA Sequencing Analysis of Fecal Microbial DNA & RNA from iSWAB-Microbiome at Room Temperature Storage vs. Frozen Samples for 40 Days

### Chao Alpha Diversity Boxplots



### Shannon Alpha Diversity Boxplots



This data was generated using shotgun sequencing platform from  COSMOSID<sup>®</sup> Unlocking The Microbiome

### CUSTOMIZATION OPTIONS

- ✓ iSWAB-Microbiome can be customized using larger or smaller collection devices, depending on your sample size requirements.
- ✓ Other items which can be customized include IFU and product labeling.
- ✓ For more information, please contact sales@mawidna.com.



Mawi DNA Technologies LLC  
[www.MawiDNA.com](http://www.MawiDNA.com)

26203 Production Ave, Suite 3 | Hayward, CA 94545

Tel: 510-256-5186 | US/Canada: 510-256-5186 | 855-DNA-SWAB

 CEpartner4U [www.cepartner4u.com](http://www.cepartner4u.com)

Esdoornlaan 13 | 3951 DB | Maarn | The Netherlands



iSWAB is a trademark of Mawi DNA Technologies LLC. Specifications, terms and pricing are subject to change. Not all products are available in all countries. Please consult your local sales representative for details. © 2013 Mawi DNA Technologies LLC. All rights reserved. Version ISFDS-1.01